



L'AGENCE DE SAINT RÉMY

MADE IN ALPILLES

2 415 000 €

Buying house

Surface : 220 m²

Surface of the land : 1580 m²

Year of construction : 2023

Exposition : Sud

View : Jardin

Hot water : Thermodynamique

Inner condition : excellent

External condition : exceptional

Couverture : tiles

Amenities :

Eau de ville, Piscine sel 10/4, Sel, volet roulant, Menuiserie bois et fer, Portail, pool house, Jardin clos arboré paysagé, terrasse couverte

4 bedroom

1 terrace

3 showers

3 WC

2 garages

4 parkings

Legal information

2 415 000 € fees included

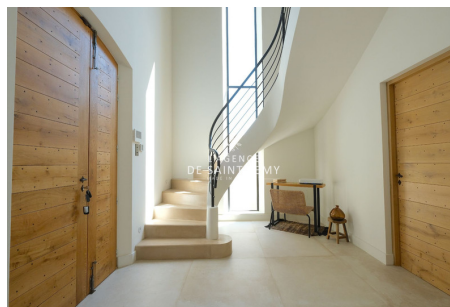
5,92% VAT of fees paid by the buyer (2 280 000 € without fees), no current procedure, information on the risks to which this property is exposed is available on georisques.gouv.fr



House 378 A Saint-Rémy-de-Provence

Magnificent recent house located a few steps from downtown Saint-Rémy, offering an exceptional living environment. Nestled in the heart of a 1600 m² landscaped garden, this property combines modern comfort and tranquility. The house has four spacious bedrooms and three elegant bathrooms, perfect for hosting a large family or guests. The double garage provides secure parking space for your vehicles, as well as additional storage space. The interior of the house seduces with its generous volumes and its quality finishes. The living room, bathed in light thanks to large bay windows, opens onto a sunny terrace and a perfectly maintained garden. The modern, fully equipped kitchen is designed to meet the demands of even the most passionate chefs. The 1600 m² garden, entirely enclosed and planted with trees, is a true haven of peace. Perfectly furnished, it invites relaxation and serenity. Whether for an outdoor lunch under the trees or to enjoy the...

Document non contractuel - 03/09/2024



L'agence de Saint Rémy - 43, bd Victor Hugo - Saint-Rémy-de-Provence

Tél: 04 90 20 80 70 - lagencedesaintremy@gmail.com

Carte professionnelle n°CPI 13012018000031153 et CPI 13012018000030996 - RCS TARASCON 802 930 420

Protocole COVID : Vendeur et visiteur portent un masque pendant la visite et utilise leur propre gel hydro alcoolique. Visites: 30 minutes max, (1 par demie-journée) 1 personne max, aérer les pièces 15mn avant et après. Échangez les docs par emails. Les visiteurs ne doivent rien toucher. Respectez la distanciation physique. Pièces infé à 10m2: 2 personnes max. Chacun utiliser son gel hydro alcoolique et utiliser son propre stylo. Si vous avez un doute (fièvre, toux etc.) il v vaut mieux reporter la visite.