



# L'AGENCE DE SAINT RÉMY

MADE IN ALPILLES

1 260 000 €

**Buying townhouse**

**8 rooms**

**Surface : 180 m<sup>2</sup>**

**Surface of the land : 70 m<sup>2</sup>**

**Year of construction : 1880** rénovée en 2022

**Exposition : Sud**

**Hot water : Electrique et clim réversible**

**Inner condition : new**

**External condition : new**

**Couverture : tiles**

**Amenities :**

bedroom bungalow , Piscine 3,5 X 2, stone house, charming house, contemporary house, house near center, downtown

6 bedroom

1 terrace

3 showers

4 WC

1 parking

**Legal information**

1 260 000 € fees included

5,00% VAT of fees paid by the buyer

(1 200 000 € without fees), no current procedure, information on the risks to which this property is exposed is available on

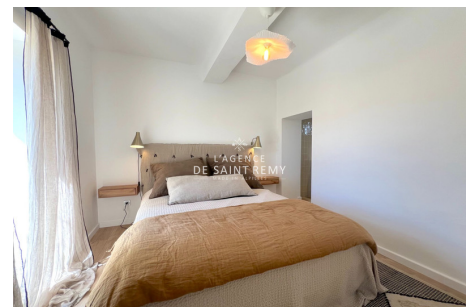
[georisques.gouv.fr](http://georisques.gouv.fr)



## Townhouse 369A Saint-Rémy-de-Provence

Exclusively at the St Rémy agency, 2 steps from the city center of St Rémy de Provence, quiet, Superb village house completely renovated combining stone and modernity, quality materials, composed on the ground floor of a kitchen / dining room, cellar; entrance hall, living room, bedroom with shower room and dressing room, on the 1st floor, bedroom with shower room opening onto a beautiful terrace with a lovely view, 2 bedrooms, shower room and on the top floor, large office and 2 bedrooms. Course of about 70 m<sup>2</sup> nicely laid out, pool, terrace, parking. To visit without delay

Energy class (dpe) : B - Emission of greenhouse gases (ges) : A  
Document non contractuel - 27/09/2024



**L'agence de Saint Rémy - 43, bd Victor Hugo - Saint-Rémy-de-Provence**

Tél: 04 90 20 80 70 - [lagencedesaintremy@gmail.com](mailto:lagencedesaintremy@gmail.com)

Carte professionnelle n°CPI 13012018000031153 et CPI 13012018000030996 - RCS TARASCON 802 930 420

**Protocole COVID :** Vendeur et visiteur portent un masque pendant la visite et utilise leur propre gel hydro alcoolique. Visites: 30 minutes max, (1 par demie-journée) 1 personne max, aérer les pièces 15mn avant et après. Échangez les docs par emails. Les visiteurs ne doivent rien toucher. Respectez la distanciation physique. Pièces infé à 10m2: 2 personnes max. Chacun utiliser son gel hydro alcoolique et utiliser son propre stylo. Si vous avez un doute (fièvre, toux etc.) il v vaut mieux reporter la visite.