



L'AGENCE DE SAINT RÉMY

MADE IN ALPILLES

1 155 000 €

Buying townhouse

8 rooms

Surface : 180 m²

Surface of the land : 70 m²

Year of construction : 1880 rénovée en 2022

Exposition : Sud

Hot water : Electrique et clim réversible

Inner condition : new

External condition : new

Couverture : tiles

Amenities :

bedroom bungalow , Piscine 3,5 X 2, stone house, charming house, contemporary house, house near center, downtown

6 bedroom

1 terrace

3 showers

4 WC

1 parking

Legal information

1 155 000 € fees included

5,00% VAT of fees paid by the buyer

(1 100 000 € without fees), no current procedure, information on the risks to which this property is exposed is available on

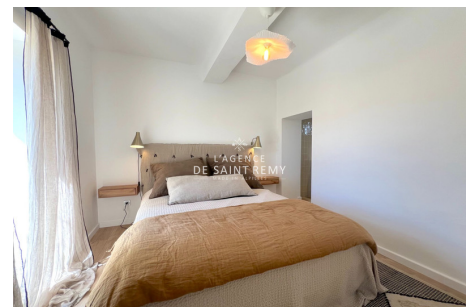
georisques.gouv.fr



Townhouse 369A Saint-Rémy-de-Provence

Exclusively at the St Rémy agency, 2 steps from the city center of St Rémy de Provence, quiet, Superb village house completely renovated combining stone and modernity, quality materials, composed on the ground floor of a kitchen / dining room, cellar; entrance hall, living room, bedroom with shower room and dressing room, on the 1st floor, bedroom with shower room opening onto a beautiful terrace with a lovely view, 2 bedrooms, shower room and on the top floor, large office and 2 bedrooms. Course of about 70 m² nicely laid out, pool, terrace, parking. To visit without delay

Energy class (dpe) : B - Emission of greenhouse gases (ges) : A
Document non contractuel - 26/12/2024



L'agence de Saint Rémy - 43, bd Victor Hugo - Saint-Rémy-de-Provence

Tél: 04 90 20 80 70 - lagencedesaintremy@gmail.com

Carte professionnelle n°CPI 13012018000031153 et CPI 13012018000030996 - RCS TARASCON 802 930 420

Protocole COVID : Vendeur et visiteur portent un masque pendant la visite et utilise leur propre gel hydro alcoolique. Visites: 30 minutes max, (1 par demie-journée) 1 personne max, aérer les pièces 15mn avant et après. Échangez les docs par emails. Les visiteurs ne doivent rien toucher. Respectez la distanciation physique. Pièces infé à 10m2: 2 personnes max. Chacun utiliser son gel hydro alcoolique et utiliser son propre stylo. Si vous avez un doute (fièvre, toux etc.) il vaut mieux reporter la visite.