



L'AGENCE DE SAINT RÉMY

MADE IN ALPILLES

1 695 000 €

Buying house

Surface : 257 m²

Surface of the land : 2890 m²

Exposition : Sud ouest

View : Dégagée

Hot water : Electrique

Inner condition : new

External condition : new

Couverture : tiles

Amenities :

City water, Piscine 13/5 chauffée sel...,

Menuiserie alu, fireplace, Jardin clos

arboré, Portail automatique,..., Visiophone,

interphone,...

8 bedroom

8 showers

Legal information

1 695 000 € fees included

5,94% VAT of fees paid by the buyer

(1 600 000 € without fees), no current procedure, information on the risks to which this property is exposed is available on

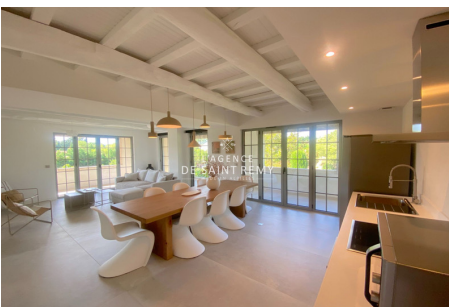
georisques.gouv.fr



House 373A Saint-Rémy-de-Provence

Beautiful Renovated House for Sale in Saint-Rémy-De-Provence Discover this magnificent 280 m² house, completely renovated with taste and elegance. Located in a green setting, this property includes two distinct dwellings, each offering modern comfort and a warm atmosphere. Ideal for a large family, to accommodate friends, or to create gîtes, this house adapts to your needs and your projects. The house includes a total of eight spacious bedrooms, distributed equally between the two dwellings. Each bedroom has its own bathroom, offering optimal comfort and privacy to each occupant. The bright and well-appointed living spaces are perfect for getting together with family or friends. The modern, fully equipped kitchens will delight cooking enthusiasts. The vast 4000 m² garden, enclosed and planted with trees, is a true haven of peace. There you will find a beautiful heated swimming pool, a major asset for enjoying beautiful sunny days or summer...

Document non contractuel - 27/07/2024



L'agence de Saint Rémy - 43, bd Victor Hugo - Saint-Rémy-de-Provence

Tél: 04 90 20 80 70 - lagencedesaintremy@gmail.com

Carte professionnelle n°CPI 13012018000031153 et CPI 13012018000030996 - RCS TARASCON 802 930 420

Protocole COVID : Vendeur et visiteur portent un masque pendant la visite et utilise leur propre gel hydro alcoolique. Visites: 30 minutes max, (1 par demie-journée) 1 personne max, aérer les pièces 15mn avant et après. Échangez les docs par emails. Les visiteurs ne doivent rien toucher. Respectez la distanciation physique. Pièces infé à 10m2: 2 personnes max. Chacun utiliser son gel hydro alcoolique et utiliser son propre stylo. Si vous avez un doute (fièvre, toux etc.) il v vaut mieux reporter la visite.